



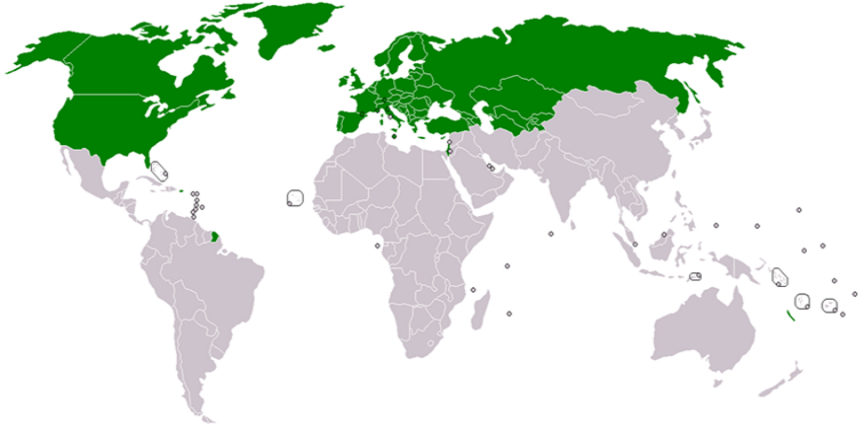
**Introduction UNECE and WPLA**



**United Nations Economic Commission for Europe**

56 member States in Europe, Central Asia and North America

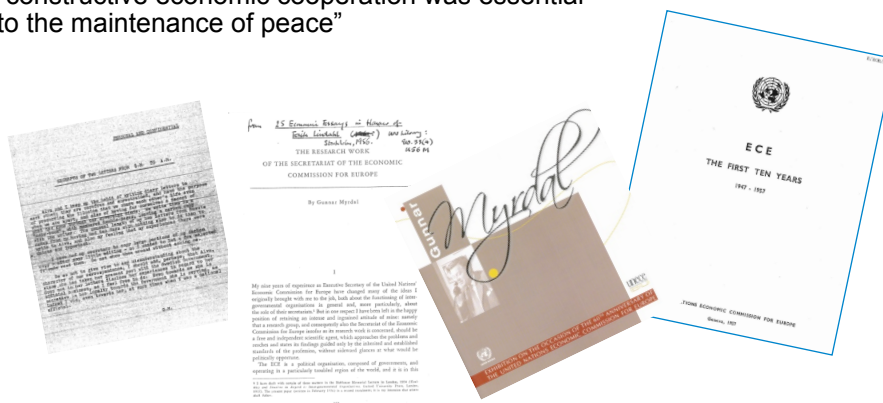
An intergovernmental platform for policy dialogue and exchange of best practices



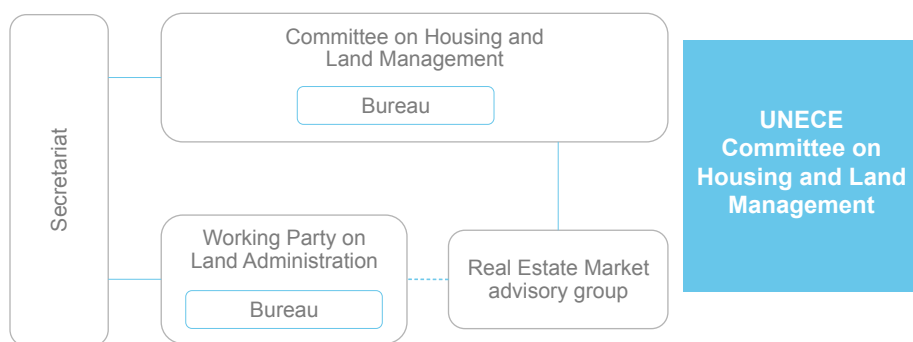


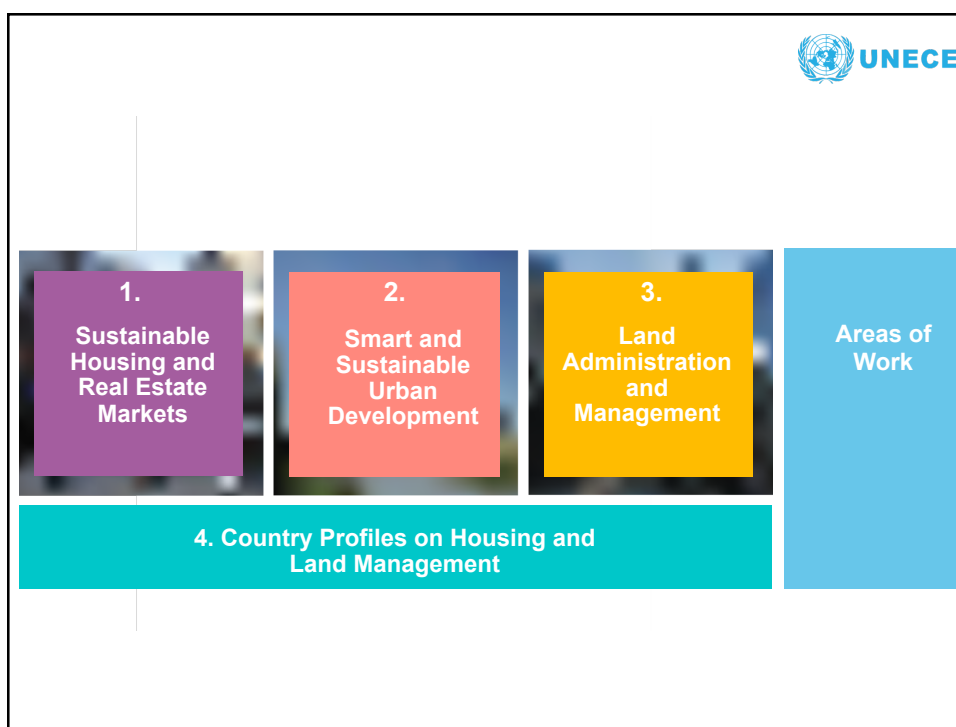
## The mandate

UNECE established because, as stated in resolution number 1 at the 6th session in 1951, "constructive economic cooperation was essential to the maintenance of peace"



## UNECE Committee on Housing and Land Management governance structure





## UNECE and the SDGs

The 2030 Agenda for Sustainable Development

The grid shows 17 SDGs with involvement levels: 1 (No involvement), 2 (Some involvement), 3 (Medium involvement), 4 (High involvement), 5 (High involvement), 6 (High involvement), 7 (Some involvement), 8 (Some involvement), 9 (Some involvement), 10 (Some involvement), 11 (Some involvement), 12 (Some involvement), 13 (Some involvement), 14 (Some involvement), 15 (Some involvement), 16 (Some involvement), 17 (Some involvement). A legend at the bottom indicates: No involvement (lightest blue), Some involvement (medium blue), Medium involvement (darker blue), High involvement (darkest blue).

**“UNECE’s achievements have made it a go-to source for improving global public goods and services, with more than 100 countries beyond the UNECE region benefiting from its work”.**

UN Secretary-General Ban Ki-moon



## Working Party on Land Administration (WPLA)

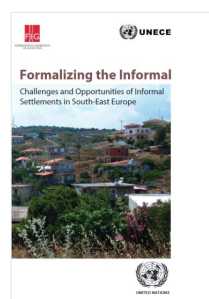
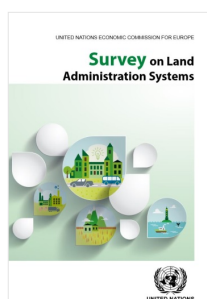
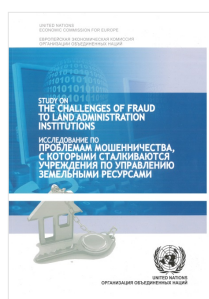
- improve Land Administration and Management through activities based on cooperation and the exchange of experiences between all countries in the region
- promotes the establishment of secure tenure, the improvement and creation of more effective land registries and the use of sustainable land use policies.
- upgrade spatial data infrastructure, transparency in conveyancing and the application of cost recovery mechanisms in cadastre and registration services.

3.  
Land  
Administration  
and  
Management



## Studies

- Challenges of Fraud to Land Administration Institutions (2011)
- Benchmarking of Land Administration Systems (2014)
- Informal settlements (2015)



3.  
Land  
Administration  
and  
Management



## Studies 2017-2018

- ❖ Organize benchmarking in land administration studies on institutional cost to support tenure security and more specifically the registration of real estate and mortgages
- ❖ Conduct a study on land consolidation and compile best practices for the UNECE region in cooperation UTM
- ❖ Carry out research on the formalization of informal real estate and informal markets.
- ❖ Carry out a comparative study on land administration services between countries with extensive land administration development experience and countries with a rapid development.
- ❖ Elaborate scenarios for future (5-10 years' perspective) land administration and land management solutions, taking into account Agenda 2030 and the New Urban Agenda
- ❖ Support UN-GGIM in preparing a tenure atlas of the World



# Thank you for your attention!

Rik Wouters  
Vice Chair WPLA  
Rik.Wouters@Kadaster.nl

Follow us:  
@UNECE Housing and Land Management

